



PERFECT SHAFTS INTERNATIONAL

Mining & Ground Support Specialist

Company Profile 2025



PERFECT SHAFTS INTERNATIONAL

CONTENTS

Index

01

CEO Message

02

Company Introduction

03

The Team

04

Vision | Mission | Values

05

Our services

06

Health & Safety

07

Compliance

08

Products

09

Projects

10

Contact Details

Message from the Managing Director



By Ken West, CEO, Managing Director

At **Perfect Shafts International**, our journey has been defined by an unwavering commitment to excellence, safety, and innovation. Over the years, our dedicated team and cutting-edge solutions have established us as a leading provider of specialized mining, civil infrastructure, and ground support services across the Asia-Pacific region.

Reflecting on the past 24 years, it became evident that we could further elevate our operations and service delivery. The decision was made to embark on a comprehensive restructuring to streamline our processes, enhance transparency, and ensure our clients receive the utmost value from our services.

In the early stages of 2023, we initiated a meticulous review of our existing systems, identifying areas for improvement. With the formation of a skilled task group, we delved into the intricacies of our processes, seeking ways to minimize administrative burdens, standardize costs and timelines, and implement continuous evaluation measures.

After months of collaborative effort, we've crafted a detailed plan that not only addresses these goals but also aligns with our core values of excellence, safety, and innovation. Today, I am proud to announce the successful approval of this restructuring plan by our Project team, marking a significant milestone in Perfect Shafts International's journey.

Our restructuring efforts focus on several key objectives:

Enhanced Objectivity: By minimizing the administrative workload, our examiners can focus squarely on evaluating participants objectively.

Standardization: We've introduced standardized costs and timelines, creating a level playing field for all parties seeking our specialized services.

Continuous Improvement: A robust system for ongoing evaluation ensures that our examiners and our organization are committed to proactive improvements.

This restructuring marks a new chapter for Perfect Shafts International, one where transparency, efficiency, and consistency define our approach. Where we aim to keep you informed and engaged in our continuous journey of improvement.

Ken West
CEO and Managing Director
Perfect Shafts International Limited



PERFECT SHAFTS INTERNATIONAL



Company Introduction

Perfect Shafts International Limited offers proven capability in both small or major mining and civil infrastructure projects. With 24 years of experience in mining, ground support and construction in Papua New Guinea, Hong Kong, Indonesia and Australia, the company provides a combination of strategic and hands-on experience and ability. Their flexibility to adapt to a client's needs and procurement method, strong relationships with suppliers, and track record in recovering problematic projects make them a reliable choice for any project.

We offer our clients a total solutions, from feasibility studies, project management, concept planning to comprehensive operations. Since our first project in the mid- 2000, PSI management team has been consistently recognised as delivering solutions across the Asian region. As a full-service PSI has the necessary resources and expertise to help clients realise virtually any infrastructure undertaking.

At **PSI Limited** we believe in leading by innovation. This means challenging conventional practices and adapting to new technologies, sharing knowledge and learning from mistakes. In today's highly competitive environment, our clients depend on our use of innovative technology and business systems to deliver operational excellence and pioneer new and better ways to overcome challenges.

..We make it happen through high quality people, technology and management..



PERFECT SHAFTS INTERNATIONAL



Company Introduction

Area of operation

Perfect Shafts International operates primarily in the Asia Pacific Region. With a focus on delivering mining, civil and ground support services, our area of operation encompasses diverse locations within this region, including Australia, Papua New Guinea, and other strategic locations where our expertise is in demand.

Strategy

Perfect Shafts International's business strategy focuses on delivering cutting-edge mining, civil, ground support solutions through a commitment to excellence, innovation, and sustainability. By leveraging strategic partnerships, embracing technological advancements, and prioritizing corporate social responsibility, we aim to maintain industry leadership and foster long-term, mutually beneficial relationships with clients and communities.

Quality Assurance and Control Policy

At **Perfect Shafts International**, our commitment to quality is integral to our success. We adhere to a rigorous Quality Assurance and Control Policy to ensure the highest standards in all aspects of our mining and civil operations. We employ advanced quality management systems, conduct regular inspections, and engage in continuous improvement initiatives. Through employee training and stakeholder collaboration, we strive to exceed industry benchmarks, delivering safe, efficient, and environmentally responsible solutions to our valued clients.



PERFECT SHAFTS INTERNATIONAL

THE TEAM



KEN WEST
CEO & MANAGING DIRECTOR

Ken West is a seasoned industry leader with a distinguished career spanning four decades. With a proven track record as an operations manager and project director, Ken has successfully overseen numerous complex mining, engineering, and infrastructure projects both nationally and internationally. His exceptional leadership skills and hands-on approach have consistently delivered improved production rates and successful project outcomes. Ken's strategic vision, coupled with his extensive experience in managing large teams and navigating complex project constraints, ensures the continued success and growth of Perfect Shafts International.



ERIC YARURA
DIRECTOR/ COMMUNITY LIASON

Eric serves as Director and Community Liaison Officer at Perfect Shafts International, leveraging his multifaceted skills to foster strong community relations and drive business development initiatives. Additionally, he plays a pivotal role in overseeing logistic coordination, ensuring seamless operations across projects. With his diverse expertise and commitment to excellence, Eric enhances our company's engagement with stakeholders while efficiently managing logistical aspects of our projects.



REYNOLD KANAMA
COUNTRY MANAGER

Reynold is oriented and performance-driven in the mining & Ground Support industry with over 20 years of hands-on experience. His expertise spans both technical and operational aspects of the industries, with full qualifications on design of infrastructure and mining projects and with full compliance to all safety standards. Reynold's leadership and proficiency contribute significantly to the success of the company.



Our Commitments

Our Vision

- At Perfect Shafts International Limited, our vision is to be the industry leader in setting new standards for operational excellence, sustainability, and innovation in the mining, civil and ground support sectors. We aspire to be the preferred partner for clients seeking reliable, cost-effective, and customized solutions that drive long-term value and success. Through our unwavering dedication to quality, safety, and continuous improvement, we aim to shape the future of the industry and create lasting positive impacts for our clients, employees, and communities.

Our Mission

- Our mission at Perfect Shafts International Limited is to deliver exceptional, safe, and innovative solutions that surpass client expectations and drive sustainable growth. We are committed to leveraging our expertise, advanced technology, and collaborative approach to provide efficient and cost-effective services in the mining, civil, and ground support sectors. By prioritizing safety, integrity, and client satisfaction in all our endeavors, we aim to build enduring relationships, foster industry excellence, and contribute positively to the communities we serve. Our mission is to be the trusted partner of choice for clients seeking excellence, reliability, and value in every project we undertake.

Our Values

- Excellence:** We are committed to achieving the highest standards in everything we do. Our pursuit of excellence extends across all aspects of our operations, from project planning to execution.
- Integrity:** Integrity is the cornerstone of our business. We operate with honesty, transparency, and accountability, building trust with our clients, partners, and stakeholders.
- Innovation:** Embracing innovation is at the heart of our approach. We challenge conventional practices, adopt new technologies, and foster a culture of continuous improvement to stay at the forefront of the industry.
- Collaboration:** We believe in the power of collaboration. Working as a team, both internally and with our clients and partners, we achieve greater success and create lasting value.



PERFECT SHAFTS INTERNATIONAL

Our Services

Ground Support

- Emergency Landslide response
- Concrete Spraying & Laying
- Retaining Wall Construction
- Rock Bolting, Meshing, Ground Anchors
- Drainage
- Anchor Drilling
- Stressing
- Whaler Beam Installation
- Labor Solutions
- Grouting Services
- Pit wall Depressurization Drilling & Casing
- Tiltex B Anti Cracking GCCM Solution

Civil Infrastructure

- Project Management
- Civil Engineers & Design
- Road Construction
- Bridge Construction & Repairs
- Pipeline Construction
- Concrete Works & Spraying
- Building & Maintenance
- Grouting Services
- Rock Bolting
- Steel Fixing
- Labor Solutions

Mining Service

- Open Cut Mining
- Underground Mining
- Project Management
- Shaft Sinking
- Drill & Blast
- Ground Support
- Shutdown Services
- Grouting & Concrete Spraying
- Mine Services Installation
- Consulting
- Labor Solutions
- Engineering Mine Design
- Maintenance Services



PERFECT SHAFTS INTERNATIONAL



CERTIFICATE OF RECOGNITION

PROUDLY PRESENTED TO

Ken West

MOSA JV Stabilisation Project - Lihir
Proactive participation in Safety for achieving 1,000,000
Man-hours LTI and MTI Free
NOVEMBER 2023


STEPHEN CHALMERS
DEPUTY PROJECT MANAGER

Health & Safety

Company's Responsibility

Perfect Shafts International (PSI) is committed to its moral and legal responsibility to provide a safe and healthy work environment for workers, sub-contractors, clients and customers, this commitment extends to ensuring that operations do not place the local community at risk of injury, illness to personal or damage to property and the environment.

Our Workplace Health and Safety (WHS) objective is to actively manage our workplace risks to as low as reasonably practical by implementing effective mitigation controls and prevent all injuries and incidents.

Our target is to have **Zero** injuries.

PSI HSE management System is built in an alignment with ISO 45001, PNG Mining Safety Act 1997 and Industrial Safety, Health, and Welfare Amendment Act 2016.

Employees Responsibility

Every employee shall endeavour to comply with all relevant legislation, instructions, rules, policies, and procedures in the interest of Health & Safety. Employees are mutually responsible for their Health & Safety including those around them whilst utilizing equipment and machinery properly and with minimum risk.

Health and
Safety



PERFECT SHAFTS INTERNATIONAL



Compliance

Compliance

Perfect Shafts International is committed to conducting its business ethically and maintaining and promoting an enterprise-wide culture that emphasizes integrity, individual and institutional acceptance of responsibility, effective self-policing, and transparency in the relationships between our key stakeholders, sub-contractors, clients and customers including government officials and agencies. In furtherance of this commitment, the company has established a compliance and ethics program and abides by its requirements.

The compliance program is a dynamic program that provides flexible framework for adapting to the changing environment in which Perfect Shafts International operates. It is continually evaluated by our executive team to ensure that it functions as intended, serves the purpose for which it has been designed, and enables the company to meet its high standards and commitment to compliance.



PERFECT SHAFTS INTERNATIONAL



Products: Tiltex Papua New Guinea

Perfect Shafts International Partners with Tiltex Australia to Introduce Innovative Erosion Control Solutions in Papua New Guinea

Perfect Shafts International (PSI) is proud to announce its recent collaboration with Tiltex Australia, a leading manufacturer of innovative erosion control products. This partnership marks a significant milestone in PSI's commitment to offering cutting-edge solutions to the construction and mining industries in Papua New Guinea.

Tiltex Australia's flagship product, the Exclusive 80MPa GCCM (Geosynthetic Cementitious Composite Mat) known as Tiltex B, revolutionizes erosion control with its advanced technology and superior performance. Comprising a high-strength, rapid-setting cement-sand mix sandwiched between two layers of geotextile, Tiltex B offers unmatched durability, strength, and flexibility. With added Anti Cracking fiber enhancement, it surpasses traditional erosion control methods such as rip rap, stone chipping, and shotcrete.

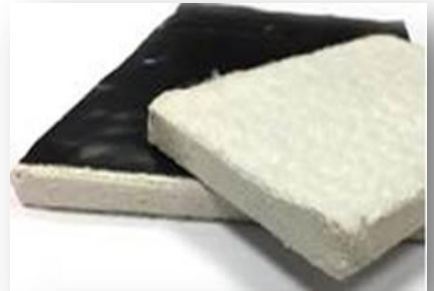
PSI recognizes the urgent need for effective erosion control solutions in Papua New Guinea, where challenging environmental conditions often pose significant threats to infrastructure and mining operations. By partnering with Tiltex Australia, PSI aims to address these challenges and provide clients with innovative products that enhance project efficiency, sustainability, and safety.

As the exclusive agent for Tiltex Australia's product range in Papua New Guinea, PSI will oversee the distribution and implementation of Tiltex B across various industries, including mining, construction, and infrastructure development. With its extensive experience and expertise in the local market, PSI is well-positioned to deliver tailored solutions that meet the unique needs and requirements of its clients.

Tiltex B offers numerous advantages over traditional erosion control methods, including cost-effectiveness, faster construction time, and greater safety controls. With its ability to achieve 50MPa compressive strength within 24 hours of hydration, Tiltex B ensures reliable performance in even the most demanding environments.

PSI is committed to providing comprehensive support and services to clients throughout the implementation process, from initial consultation to product delivery and installation. By leveraging Tiltex Australia's cutting-edge technology and PSI's industry-leading expertise, clients can trust in the reliability, efficiency, and effectiveness of Tiltex B for their erosion control needs.

In conclusion, PSI's partnership with Tiltex Australia represents a significant step forward in the advancement of erosion control solutions in Papua New Guinea. Together, we are dedicated to empowering our clients with innovative



PERFECT SHAFTS INTERNATIONAL



Projets: Current

Ph24 Wall Stabilization Project- Lihir Island, New Ireland Province, Papua New Guinea

Location:	Lihir Gold Mine Site
Year:	2023-2025
Client:	Mosa JV Limited (MOSA Niugini)
Time Frame:	Est 2 Years
Status:	Current
Project Value:	US 500 Million



Services Provided:

Perfect Shafts International (PSI) is engaged as a Labor Service Subcontractor to supply experienced supervisors and drillers to complement the project's workforce under the management of Mosa JV Limited to assist with general ground support and the drilling of anchor holes to a depth of sixty meters with casing in the geothermal area of the mine using latest technology Hutte 610 drilling machines, this type of project has never been carried out in this environment in PNG before.

PSI is also supplying experienced personnel in other areas of the project including concrete spraying, steel fixing, anchor installation, grouting, maintenance and rock bolt drilling and installation in environmentally challenging conditions, the project successfully ongoing without any incidents nor lost time injuries for over 1,000,000-man hours to date.



Projects: Completed

Perfect Shafts International (PSI) has an extensive portfolio of previous projects showcasing their expertise in ground stabilization, slope stabilization, tunnel development, and sprayed concrete applications. Some notable projects include:

Project Management Hong Kong

Location:	MTR XRL 824
Year:	February 2014 to December 2014
Client:	Kier-Kaden-Ossa JV
Time Frame:	5 months
Status:	Completed
Project Value:	\$1.2 Billion



Services Provided

Perfect Shafts International (PSI) was engaged to supply project management services where we supplied manpower for the running of the XRL 824 development for twin rail tunnels, responsibility was to manage the development and the 260 workers: consisting of local Nepalese, Chinese and Philippines's and direct reports consisting of underground superintendents, mechanical, electrical, engineers, surveyors, civil contractors. PSI responsibility was controlling and optimizing the performance of the contract to ensure that all contract requirements are met, to run the project on budget and to monitor all the operations for the contract, with the main focus on safety, training and leadership with the Coordinating and ensuring maximum utilization of equipment and manning. The project was successfully completed on time and without any time loss time issues.



PERFECT SHAFTS INTERNATIONAL



Project Management Mining Papua New Guinea

Location:	Kainantu Gold Mine
Year:	Feb 2015 to April 2017
Client:	Otterburn Resources Corp
Time Frame:	24 month
Status:	Completed



Perfect Shafts International (PSI) was engaged to carry out and supply project management for the mining operations for the mine restart preparedness activities in mine rehabilitation and mine infrastructure installations including mine ventilation upgrade and into the commencement of development mining.

The Kainantu underground mine had been placed under Care & Maintenance by Barrick Kainantu Limited a subsidiary of Barrick Gold Corporation after it ceased mining operations in 2008.

PSI had to provide manpower to the mine executive management by liaising with the various government regulatory bodies to meet the compliance protocols for explosive's magazines storage facilities and the blasting permits for the commencement of mining activities.



Kestral Mine Extension Project North Queensland, Australia

Location:	Emerald North Queensland
Year:	October 2008 to March 2009
Client:	BGC Contracting (Rio Tinto) (KBR)
Time Frame:	6 months
Status:	Completed
Project Value:	\$24 Million



Perfect Shafts International (PSI) was initially engaged to provide drilling & blasting services to blast rock in the box cuts for the portal arch installation approximately 50,000m³ was blasted in the conveyor box cut and another 50,000m³ in the transport box cut. More rock was then discovered in the environmental dam amounting to a further 250,000m³ of rock. Whilst performing the blasting work PSI were also engaged to perform the Portal Face Stabilization in both box cuts, which involved the drilling & grouting of permanent ground anchors, grouted dowels, spilling bars and deep drainage holes, followed by a layer of reinforcing mesh and shotcrete to ensure the safety of workers whilst the installation of arches and backfilling was being performed. Following the completion of these on site works, PSI team of experienced personals including operators & supervisors were hired to assist with the installation of arches and associated works set out.

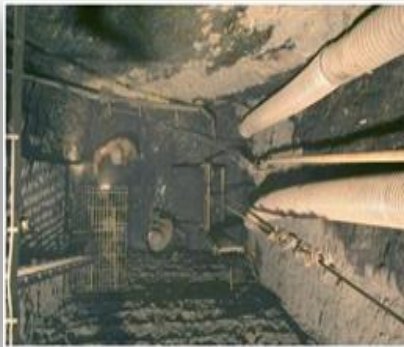


PERFECT SHAFTS INTERNATIONAL



Macarthur Chambers Shaft & Tunnel Project Brisbane, Queensland, Australia

Location:	Brisbane Queen Street Mall
Year:	2002
Client:	Canstruct Civil Engineers
Time Frame:	4 months
Status:	Completed
Project Value:	\$8.6 Million



Services provided:

Perfect Shafts International (PSI) was engaged to sink a four-meter square elevator shaft and tunnel inside the heritage listed Macarthur Chambers building which was converted to luxury apartments just over 10 years ago. The project was in a very sensitive area due to everyday access to pedestrians, workers and normal daily constraints. Due to the issues faced normal shaft sinking methods could not be used, therefore, PSI used traditional hand held jack hammers to sink the twenty meter shaft at a rate of 300mm per day. At the bottom of the shaft, a 25-meter tunnel was constructed into an existing car park, using methods of hand held drilling, rock splitting and the use of a two ton excavator to break the hard Brisbane tuff rock'. Excavated material was sent to the top of the shaft for removal into skips and loaded onto trucks at night time. The project was successfully completed on time and without any loss time issues.



PERFECT SHAFTS INTERNATIONAL



Tunnel Development Project Brisbane Australia

Location:	Mt Cootha
Year:	2014 -2015
Client:	John Holland
Time Frame:	7 months
Status:	Completed
Project Value:	1.5 billion



Services Provided:

Perfect Shafts International (PSI) was contracted by John Holland to develop a conveyor tunnel in the heart of Brisbane to remove the spoil from the TBM on the Legacy way tunnel development into the Mt Cootha quarry. Drill & blast and ground support was required to develop the 100 meter tunnel the project was completed on time and without loss time injury.



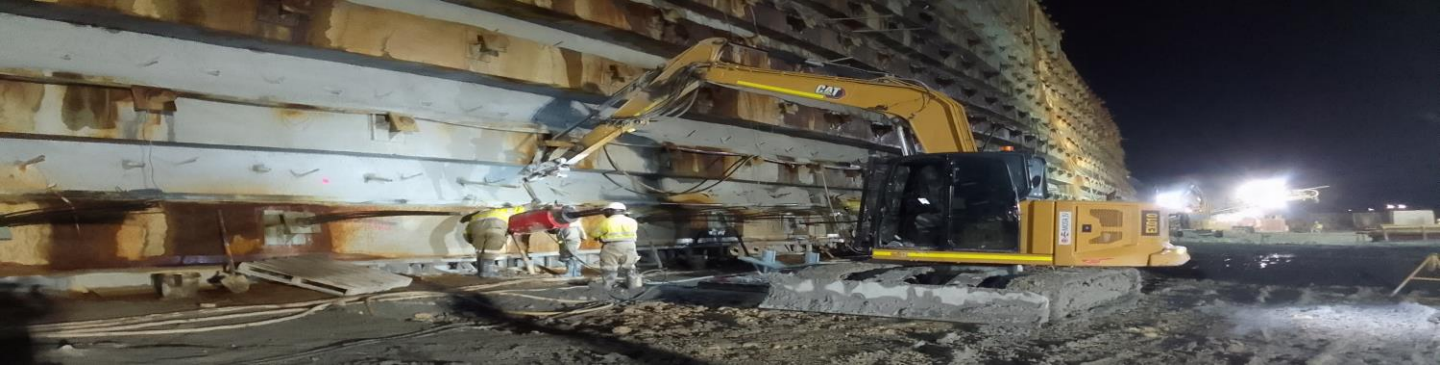
Ground Stabilization Project, North Queensland, Australia

Location:	One Bright Point Magnetic Island, North Queensland
Year:	April 2005 to October 2005
Client:	Meridien & Bovis Lend Lease
Time Frame:	6 months
Status:	Completed
Project Value:	\$ 7.2 Million



Services provided:

Perfect Shafts International (PSI) was engaged to carry out cliff face Stabilization behind residential unit site. Involved rock bolts, shotcrete and rock fall netting along with some small retaining walls, the project successfully completed on time and within budget without any incidents nor lost time injuries.



Shaft Sink Project, Victoria Australia

Location:	Ballarat Victoria
Year:	August 2009 to Jan 2011
Client:	Ballarat Gold Fields
Time Frame:	17 months
Status:	Completed
Project Value:	\$4.6 Million



Perfect Shafts International (PSI) was engaged to carry out and supply complete mining & equipment package to sink a shaft 110 meters deep by 6 meters diameter by strip and line process. The project was changed to a blind sink due to poor ground conditions encountered and we had to fully concrete lined the shaft under challenging constraints, the project was delivered by drill & blast and the waste was kibbled out of the shaft successfully of a working stage the project was completed within budget without any incidents nor lost time injuries.



PERFECT SHAFTS INTERNATIONAL



Quarry Projects, Queensland, Australia

Location:	Throughout Queensland
Year:	September 2010 to December 2014
Client:	Variety clients
Time Frame:	5 years
Status:	Completed
Contract Value to date:	\$5.8 million

Services provided:

Perfect Shafts International (PSI) was engaged to supply mobile equipment such as crushers, drilling equipment and a full blasting services for numerous quarry's that engaged our services. All equipment was purchased brand new by PSI for the projects. Blast holes ranged from 102 mill to 120 mill diameter and bench height were up to 15 to 20 meters in depth. Broken material ranged from 100 to 3000 ton per firing. Each project was successfully completed on time and without any time loss time issues.



PERFECT SHAFTS INTERNATIONAL



Brisbane Square Walkway Tunnel Project, Queensland, Australia

Location:	Brisbane
Year:	2011 - 2013
Client:	Canstruct Civil Engineering
Time Frame:	14 Months
Status:	Completed
Contract Value to date:	\$ 18.2 Million

Services provided:

Perfect Shafts International was engaged to develop a forty meter walkway tunnel from North Quay ferry terminal to the newly built government building opposite the casino in Brisbane Square. The project was to break and excavate the rock seven meters below the main road and underneath the Brisbane square in environmentally challenging conditions and fully concrete line the tunnel. Non explosives rock breaking method were used to complete the project successfully on time and within budget without any incidents nor lost time injuries.



PERFECT SHAFTS INTERNATIONAL



PERFECT SHAFTS INTERNATIONAL

Mining & Ground Support Specialist



Reynold Kanama
Country Manager



(675) 74302870 (Reynold)
(675) 5200822 (Office)



**SECTION 03, LOT02, AMPOKEI
STREET, KAINANTU, E.H.P**



reynold@perfectshafts.com
info@perfectshafts.com